



INX -PAN Dental Panoramic System

Technical Specifications

| | | |
|-----|--------------------|--|
| 1. | Generator | Full wave rectified |
| 2. | Control Display | Microcontroller based 5 Line LCD Display |
| 3. | Anode Voltage | 50 Kvp to 85 Kvp |
| 4. | Anode Current | 8 to 10 mA |
| 5. | Tube Focus | 0.5mm x 0.5 mm fine focus |
| 6. | Total Filtration | 2.5 mm Al |
| 7. | Max. Power | 1.0 KW |
| 8. | Max. Line Current | 5.0 A |
| 9. | Power Requirements | 230 V AC/50 Hz |
| 10. | Vertical Movement | Motorised |

* Regulatory Requirement : AERB Type Approval



Innovation Meditech Pvt. Ltd.

B-6, Sector - 88, Phase-2, NOIDA - 201301 Delhi/NCR. INDIA

BRANCH OFFICE & RESIDENT

Jaipur, Lucknow, Patna, Hyderabad, Bhopal, Hisar

Phone No :- 0120-4571356

E-mail :-info@innovationmeditech.com

Web : www.innovationmeditech.com

AERB Approved





Panoramic Mode

| | |
|----------------------|------------------------|
| Patient Selection | Adult, Child selection |
| Selection Parameters | KV Selection |
| Exposure Time | OPG: 17 Sec |
| Cassette Size | 10" x 12" |



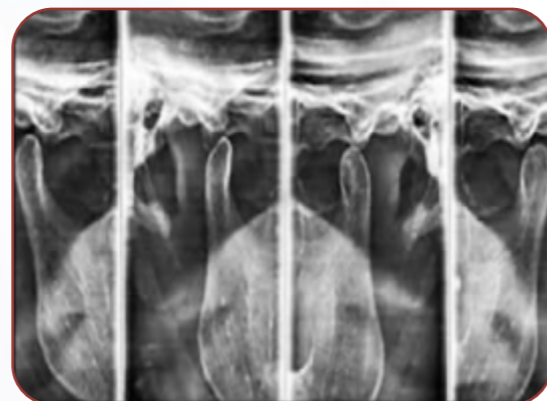
Cephalogram Mode

| | |
|----------------------|------------------------|
| Patient Selection | Adult, Child selection |
| Selection Parameters | KV, time selection |
| Cassette Size | 10" x 12" |
| Exposure Time | 0.5 to 10 Sec. |

Panoramic View



TM Joints



Cephalogram



TM Joints

| | |
|----------------------|------------------------|
| Patient Selection | Adult, Child selection |
| Selection Parameters | KV Selection |
| Exposure Time | 4"x4" Sec |
| Cassette Size | 10" x 12" |

