

# vatech india

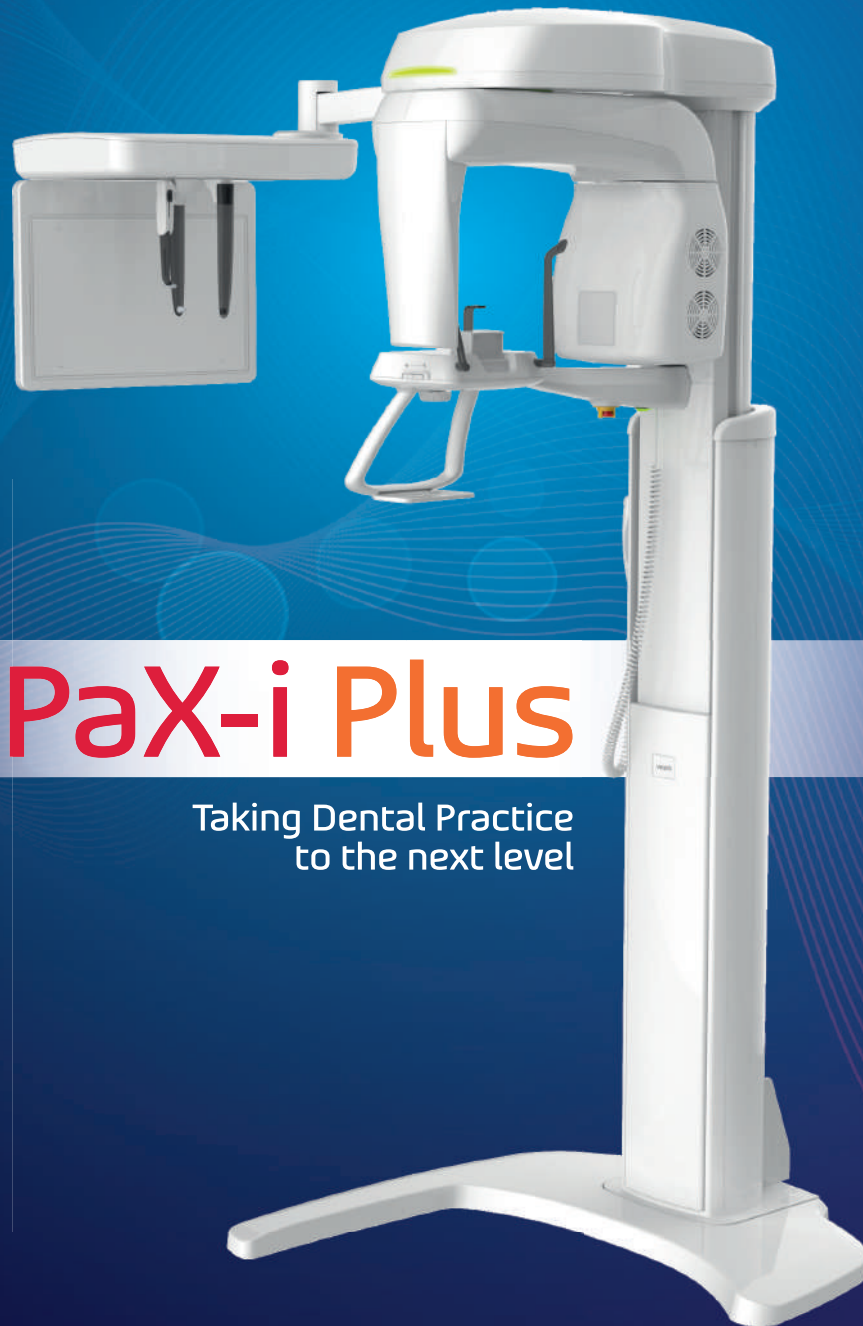
In Association with:



Experience Exceptional

## CLARITY & SPEED

MORE POWERFUL THAN BEFORE



## PaX-i Plus

Taking Dental Practice  
to the next level



LARGEST INSTALLATIONS IN INDIA

Installing 1 Vatech OPG Every 2nd Day

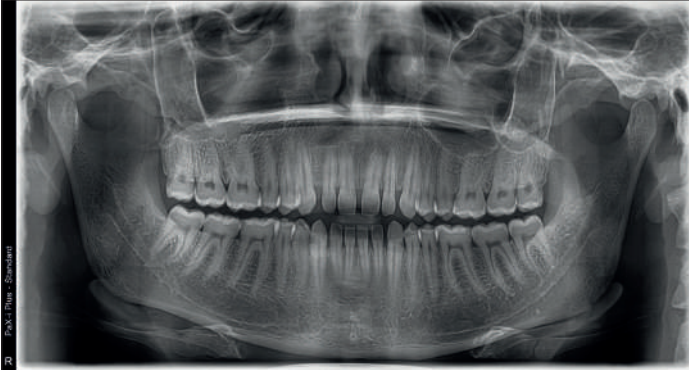
\*Base is not the part of standard unit

# ADVANCED IMAGE SOLUTION FOR ACCURATE DENTAL DIAGNOSIS

Pax-i Plus provides the most precise and high quality panoramic image by innovative imaging process and accumulated experience in dental imaging from VATECH. It improves your diagnostic accuracy with increased treatment planning and patient satisfaction.

## New standard of panoramic image - Actual Pano Resolution : 5 lp/mm

Clear and sharp panoramic image brings better diagnostics. Enhanced details especially in the anterior and dental roots can be viewed. These consistently high quality images will become the new standard of panoramic imaging. Improved Image Processing.



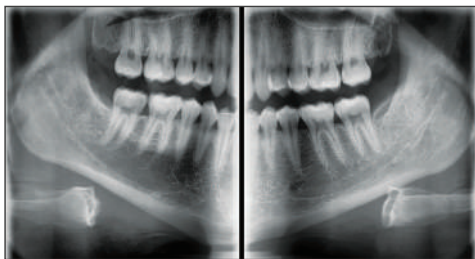
### CONFIGURATION

	PANO	CEPH
Pax-i Plus	•	–
PaX - i Plus RC	•	•

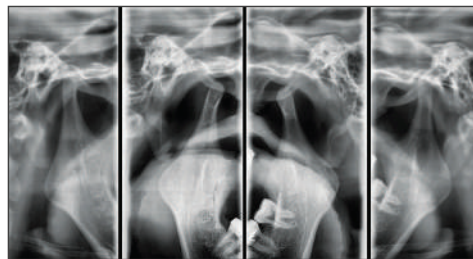
## Make diagnosis easy and efficient with various Capture Modes

Pax-i Plus has various capture modes to meet your diagnostic needs. Choose any capture mode based on the purpose of your diagnostic needs.

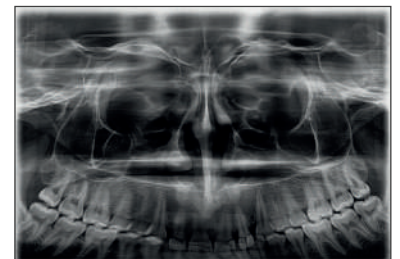
SECTION	ARCH	EXAMINATION MODE
PANO EXAMINATION	Narrow / Normal / Wide / Child	Standard / Right / Front / Left
	Orthogonal	Orthogonal Standard / Right / Front / Left Bitewing Standard / Right / Front / Left
SPECIAL EXAMINATION	Normal	TMJ LAT Open / Close TMJ PA Open / Close Sinus LAT / PA



Bitewing mode



TMJ mode



Sinus PA

## INHOUSE MANUFACTURING (Hardware + Software)



### R & D

The world's first 3-in-1 system source technologies for low dose image



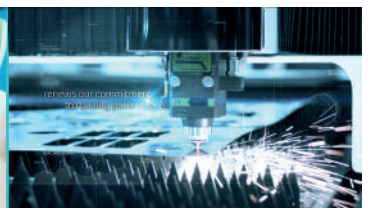
### Detector Design & Production Technology

Core technologies for scintillator deposition and TFT/CMOS detectors manufacturing



### Dental Imaging Technology

High Resolution imaging process algorithm, 2D/3D diagnostic SW technologies



### Integrated Manufacturing Process

High-Quality integrated manufacturing system optimized for precision medical devices

# ADVANCED IMAGE SOLUTION FOR ORTHODONTIC DIAGNOSIS

## EXTEND DIAGNOSTIC VALUE FOR WIDE INSIGHT

### Cephalometric (Rapid Ceph)

Pax-i Plus provides optimal images with an exclusively designed sensor for cephalometric diagnosis. As it offers two image sizes, LAT and Full LAT, you can choose one of them based on the purposes of your diagnostic needs.

## TWO BUILT IN SENSORS

Pax-i Plus offers two dedicated and embedded sensors for Pano and Ceph.

It not only allows you to capture an optimal image from each sensor but it also makes your workflow faster.



Examination Program	Exposure Time (Sec.)	Function
LATERAL	1.9	Lateral provides specialized high quality images to suit orthodontics and maxillofacial surgeries.
FULL LATERAL	3.9	Full lateral shows 30% larger images than LATERAL and the occipital area for comprehensive diagnosis.

## GREAT CLINICAL CARE WITH RAPID CEPH TECHNOLOGY

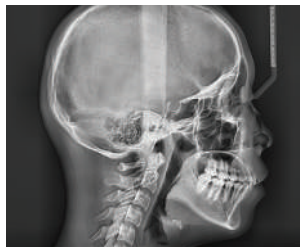
## MINIMIZE MOTION ARTIFACTS WITH RAPID CEPH TECHNOLOGY

The next step in Cephalometric Technology, Vatech's new Rapid Ceph minimizes motion artifacts and enables faster diagnostic workflow while providing the highest quality digital images.

Lateral



Full Lateral



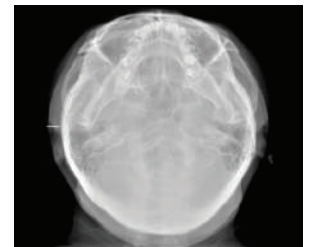
PA



Carpus



SMV (Submentovertex)



## THE COMPLETE SOLUTION, FOR YOUR CONSULTATION

EzDent-i will change the way of your consultation providing versatile tools such as clinical (EzCodi) and powerful simulation tools. This fully packaged software will increase acceptance rate and satisfaction of patients.

### 1. Simple Tool Bar

Well organised and intuitive icons make your workflow faster and efficient. They are configured in an easy to follow diagnostic sequence.

### 2. Patient Search

The patient search box is fixed on the screen so you no longer need to move to the 'patient' tab to search for a new patient.

### 3. Drag & Drop

All patient images are displayed along the bottom of the screen. Simply find the image you need and then click, drag and drop it into place. That's simple.



Quick Implant Simulation



Case Management



Scatter View

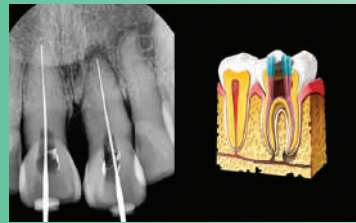


Full Size Screen

## 2 in 1 Communication with EzCodi Diagnosis and Consultation

EzCodi provides approximately 244 treatment process animations

You can display animation together with X-ray image for better consultation. This unique and useful tool will not only increase patient's understanding but also increase case acceptance.



2 in 1 Consultation



Implant Treatment

## GET SERVICE & SUPPORT FROM THE PEOPLE WHO KNOW YOUR UNIT BEST

Because Vatech makes the Hardware & Softwares, the products are truly system integrated. And only Vatech give you one-stop service and support from our experts, so most issues can be resolved in a single call. Our Support System is what makes us Most Reliable Brand in Digital Dental Industry. With the Largest Team of Professionals, we ensure to give you the Quick Solution for your concerns

## SPECIFICATIONS (PaX-i Plus : PCH-30CS)

Function	Pano + Ceph		
Focal Spot	0.5 mm (IEC60336)		
Exposure Time	Pano	Fast	7.2 sec
		Normal	10.1 sec
		HD	13.5 sec
	Rapid Ceph	1.9 / 3.9 sec	
Gray Scale	14 bit		
Tube Voltage/ Current	60 - 99 kV / 4-10 mA		

Weight	Without Ceph unit	95 kg (209.4 lbs. - without Base)
		135 kg (297.6 lbs. - with Base)
Weight	With Ceph unit	120 kg (264.5 lbs. - without Base)
		160 kg (352.7 lbs. - with Base)
Dimensions	Without Ceph unit	990 mm (L) x 1200 mm (W) x 2300 mm (H)
	With Ceph unit	1930 mm (L) x 1200 mm (W) x 2300 mm (H)

## VATECH INDIA PVT. LTD.

1016/2, 2nd Floor, S.M. Plaza, Mahipalpur Bypass, New Delhi - 110037  
 🌐 : www.vatechindia.in    ✉ : contactus@vatechindia.in    ☎ : 959 981 2206



## Innovation Meditech Pvt. Ltd.

Head Office: B-6, Sector 88, Noida Phase 2, Gautam Buddha Nagar, UP - 201301  
 🌐 : www.innovationmeditech.com    ✉ : info@innovationmeditech.com    ☎ : 8929392849

### Branch Offices:

Hisar - Meerut - Lucknow - Patna  
 Jaipur - Nagpur - Hyderabad