



**DR MECHANICAL
SINGLE COLUMN**

About Innovation Meditech (P) Ltd.

Innovation Meditech (P) Ltd. Is established by team of professional with decades of experience in healthcare technology, with a vision to offer products and services of global standards. The manufacturing facility is spread over 25000 sq. Feet with stringent quality control systems. All Products Manufactured are in compliance with the standards provided by Bureau of Indian Standards (BIS) for Mechanical and Electrical Safety and Atomic Energy Regulatory Board (AERB). Innovation Meditech (P) Ltd. Has nationwide presence with network of sales offices, resident sales representatives and dealers.

Innovation Meditech Pvt Ltd: AERB approved, certified by BIS, AERB, ISO 13485.

Leading manufacturer of X-ray and OPG machines. Your trusted source for quality medical equipm

INNOVATION MEDITECH PVT. LTD.

Toll Free No.: 1800-2026-276

Phone No.: 0120-499-6085

Address : B-6, Sector-88, Noida, Gautam Budh Nagar - 201305, UP, (INDIA)

E-Mail : info@innovationmeditech.com

Website : www.innovationmeditech.com

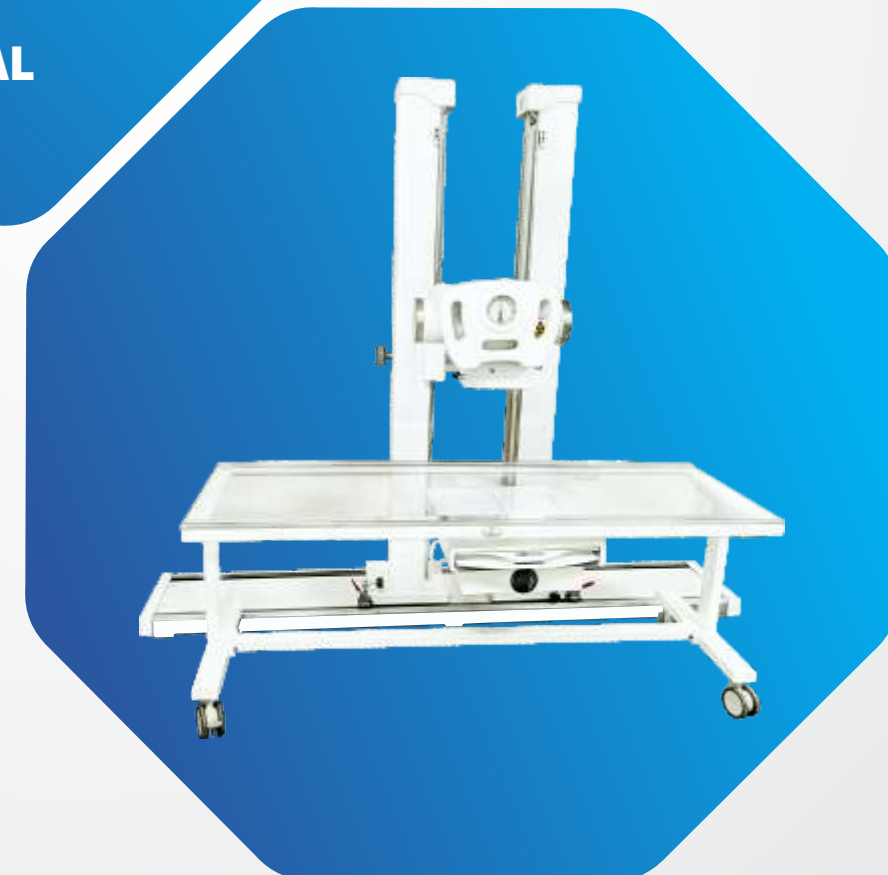


BRANCH OFFICE & RESIDENT

JAIPUR, LUCKNOW, PATNA, HYDERABAD, HISAR, KOLKATA



**DR MECHANICAL
DOUBLE COLUMN**



Our DR Mechanical Showcases Our Commitment To Delivering State-of-the-art Solutions That Re-define Medical Standards. www.innovationmeditech.com



www.innovationmeditech.com

Certified and Approved By:



PRODUCT OVERVIEW

- Suitable for small X-Ray rooms
- Compatible with existing fixed X-Ray Machine
- Compatible with Mobile X-Ray Machine



VERTICAL DR STAND

- Height of the Stand 78.5 "inch
- Easy to perform all X-Ray studies in standing position
- Appropriate for weight bearing X-Rays like the Spine, Abdomen, Pelvis, and Knee joints
- $\pm 90^\circ$ movement from vertical to horizontal position
- Rotating & tilted panel couch on both sides
- Vertical and horizontal position columns with 90° movement on both sides 17 X 1/4 X 18X1/8
- Grid size - 17 x 18
- Grid line - 10:1 (103 lines)
- Single 14"X17" retrofit panel enough to perform all types of X-rays



TOUGHENED TOP TABLE

- High weight bearing capacity
- Easy movement in all directions
- The tabletop comes in two options: Backlite Sheet and Polycarbonate Sheet.
- Weight bearing capacity - up to 125 PER KGS Per wheel.

Dr Glass Table

Length : 1860mm
Width : 660mm
Height : 730mm



ROBUST & COST-EFFECTIVE

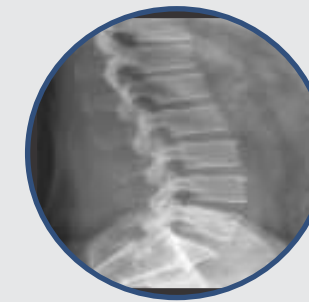
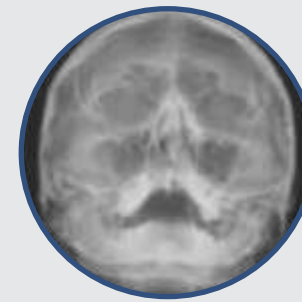
- Easy installation & smooth function
- Affordable
- High-Quality mild steel structure
- Zero investment in additional FPD panel
- 0% damage cost of the retrofit panel

Mobile Table Castors

Four 100 mm wheel dia synthetic body castors, two with brake and two without brake



VERTEX
POWERED BY INNOVATION



ADVANTAGE OF DR MECHANICAL:

One Single Panel Will Serve All Purposes Which Gets Fixed With A Specially Designed Dual Column Dr Mechanical.

Advantages :

- > Safety of DR Panel
- If your DR panel gets fixed with the x-ray machine. There is no chance of your costly panel getting damaged.
- > Cost effective.
- Single Detector serves all purposes.
- > Convenient and Time saving
- No need of moving out the Panel in rotational Bucky Diagram capable to proper 14X17 or 17x14 in any size ratio horizontal or vertical position
- > Patient comfort.
- X-Ray Table having Transparent Table Top (Acrylic) with wheel ensures movement of the Table without moving the patient for positioning.

